

FS-6950DN

► print ► copy ► scan ► fax

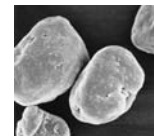
A3 MONOCHROME WORKGROUP PRINTER

SPACE TO THINK BIGGER.

For workgroups that require a wide variety of output up to A3, at speed. This flexible new generation printer, with up to 1,350 sheets paper capacity, can accommodate increases in memory, especially helpful in CAD and DTP environments. Low noise, compact design and cost-effective ECOSYS technology give you more space to think about big ideas.

- 32 pages per minute in A4, 16 pages per minute in A3
- 64 MB memory standard, upgradeable to 576 MB
- PDF direct printing from USB Flash Memory devices
- Eco-friendly, ozone-free technology
- Long-life components and easy maintenance
- Duplex unit and network connectivity as standard

Benefit from a rare combination of talents: high quality A3 output yet small footprint and a remarkably low noise level.



Kyocera shape controlled toner makes the most of every one of the 1,200 dots per inch.



ECOSYS[®]

 **KYOCERA**

FS-6950DN

A3 MONOCHROME WORKGROUP PRINTER



ECOSYS devices are designed to minimise both direct costs and indirect costs, such as maintenance, administration and consumables. The cartridge-free system requires only the toner to be replaced. The modular design concept allows you to add workflow-enhancing functions and a wide variety of paper handling capabilities as required. Integrated system software provides long-term cross-network compatibility. Kyocera's long-life components cost you and the environment less.

GENERAL

Technology: Kyocera ECOSYS, Laser
Engine speed: Up to 32/16 pages per minute A4/A3 simplex
Up to 23/10 pages per minute A4/A3 duplex
Resolution: True 1,200 dpi
Time to first page: 9 seconds or less
Warm-up time: 15 seconds or less from power on
Duty cycle: Max. 150,000 pages per month,
max. average 20,000 pages per month
Power source: AC 220 ~ 240 V, 50/60 Hz
Power consumption: Printing: 555 W, Stand-by: 10 W,
Power-Saving (ECOpower): 4.9 W
Noise (ISO 7779): Printing: 49 dB(A), Stand-by: 28 dB(A),
Power-Saving (ECOpower): immeasurably low
Dimensions (W x D x H): Main unit: 469 x 395 x 285 mm
Weight: Main unit: Approx. 19.5 kg
Certifications: TÜV/GS, CE, PTS
This product is manufactured according to ISO 9001 quality standard and ISO 14001 environmental standard.

PAPER HANDLING

All paper capacities quoted are based on a paper thickness of max. 0.11 mm. Please use paper recommended by Kyocera under normal environmental conditions.

Input capacity: 250-sheet universal paper cassette, 60-120 g/m², A3, B4, A4-R, A4, A5, B5, Letter, Letter-R, Legal, Ledger, Custom (139.7 x 148 mm to 297 x 432 mm)
100-sheet multi-purpose tray, 60-220 g/m², A3, B4, A4-R, A4, A5, A6-R, B5, Letter, Letter-R, Legal, Ledger, Custom (70 x 148 mm to 297 x 450 mm)
Max. input capacity with 4 optional paper feeders PF-430: 1,350 sheets
Duplex as standard supports A3-A5-R, 60-120 g/m²
Output capacity: 250 sheets face-down with paper full sensor and optional 250 sheets face-up with PT-430

CONTROLLER

Processor: PowerPC 750 / 400 MHz
Memory: Standard 64 MB + ECOMemory, max. 576 MB
Emulations: PCL6/PCL5e incl. PJI, KPDL 3 (PostScript 3 compatible), PDF direct print, Line Printer, IBM Proprinter X24E, Epson LQ-850, Diablo 630, KCGL (HP 7550A)
Controller language: PRESCRIBE IIe
Fonts: 80 outline fonts accessible in all emulations, 1 bitmap font, 45 types of one-dimensional barcodes plus two-dimensional barcode PDF-417, Downloadable fonts: Kyocera, PCL + TrueType format, Type 1 + 3 format
Print features: Duplex, Accounting, PDF direct printing, eMPS, low noise, no Ozone, USB-Host

System platform:

The FS-6950DN offers USB, parallel and network connectivity as standard and delivers problem-free system administration. Kyocera's single platform technology means that the same driver can be used for every Kyocera PCL/PostScript print device on the network; from single-user desktop printers to high-end multifunctional systems. Only Kyocera offers this effortless combination of IT sophistication and high-performance paper handling expertise.

PRESCRIBE IIe:

With the Kyocera page design and control language PRESCRIBE IIe, even complex graphics, logos and forms (even multipart forms) can be created independently of the system and saved and updated in the printer. Consequently, integration into print files no longer applies. They are only accessed as required and therefore relieve the load on the network.

KM-NET for Client/KM-NET Viewer:

The settings of all printers on the network can be checked visually and amended from any Windows® PC. KM-NET for Client enables easy setup and monitoring of the printer status via parallel, USB or network connection. KM-NET Viewer is an advanced printer management software tool using the standardized protocol SNMP.

INTERFACES

Standard interface: High speed bi-directional parallel (IEEE 1284), USB 2.0 (Hi-Speed), Fast Ethernet 10Base-T/100Base-TX, USB Host Interface dedicated for USB Flash Memory device, KUJO-LV option interface slot
Multiple interface connection (MIC): Allows simultaneous data transfer via up to four interfaces, with each interface having its own virtual printer.

OPTIONS

Paper handling

PF-430 Paper feeder (max. 4 units): 250 sheets, 60-120 g/m², A3, B4, A4-R, A4, A5, B5, Letter, Letter-R, Legal, Ledger, Custom (139.7 x 148 mm to 297 x 432 mm)
PT-430 Paper tray: 250 sheets face-up output tray

Memory

Printer memory: 1 DDR SDRAM DIMM slot (64, 128, 256 or 512 MB)
Storage memory: 1 slot for either CompactFlash® memory card type 1 (up to 2 GB) for forms, fonts, logos, macro storage or Microdrive™ (up to 4 GB) for forms, fonts, logos, macro storage as well as document management with eMPS functions such as quick copy, proof and hold, private print and job storage.
1 USB Host Interface (USB 1.1) for USB Flash Memory device supports PDF direct printing

Optional interface

IB-21E Network card: 10Base-T/100Base-TX
SB-50 Network card: 10Base-FL, FibreLink
SB-60 Network card: TokenRing STP/UTP
SB-70 Network card: Wireless LAN - IEEE 802.11b
SB-110FX Network card: 10Base-T/100Base-TX/100Base-FX, FibreOptic
SB-140 Network card: 10Base-2/10Base-T/100Base-TX
SB-80 Parallel interface: 2nd parallel interface - IEEE 1284
IB-11 Serial interface: RS-232C serial interface (max. 115.2 kbps)

CONSUMABLES

TK-440 Toner kit: Microfine toner for 15,000 pages with 5% coverage (ISO/IEC 19752)

Capacity of starter toner is 7,500 pages with 5% coverage (ISO/IEC 19752)

WARRANTY

2-year warranty as standard. Kyocera guarantees the drum and developer for 3 years or 300,000 pages (whichever occurs sooner), provided each printer is used and cleaned in accordance with the service instructions.



Up to 5-year on-site warranty extensions available for printer and options.



Select your options to suit your needs:



Paper feeder (PF-430)

Product depicted includes optional extras

Your Kyocera Business Partner:

Kyocera Mita Europe B.V., Hoeksteen 40, 2132 MS Hoofddorp, The Netherlands, Tel +31 (0) 20 65 40 000, Fax +31 (0) 20 65 31 256, www.kyoceramita-europe.com, info@kyoceramita-europe.com
Kyocera Mita Corporation, 2-28, 1-Chome, Tamatsukuri, Chuo-Ku, Osaka 540-8585, Japan, www.kyoceramita.com

FS-6950DN-English-8DSE6950. Kyocera does not warrant that any specifications mentioned will be error-free. Specifications are subject to change without notice. Information is correct at time of going to press. All other brand and product names may be registered trademarks or trademarks of their respective holders and are hereby acknowledged.

